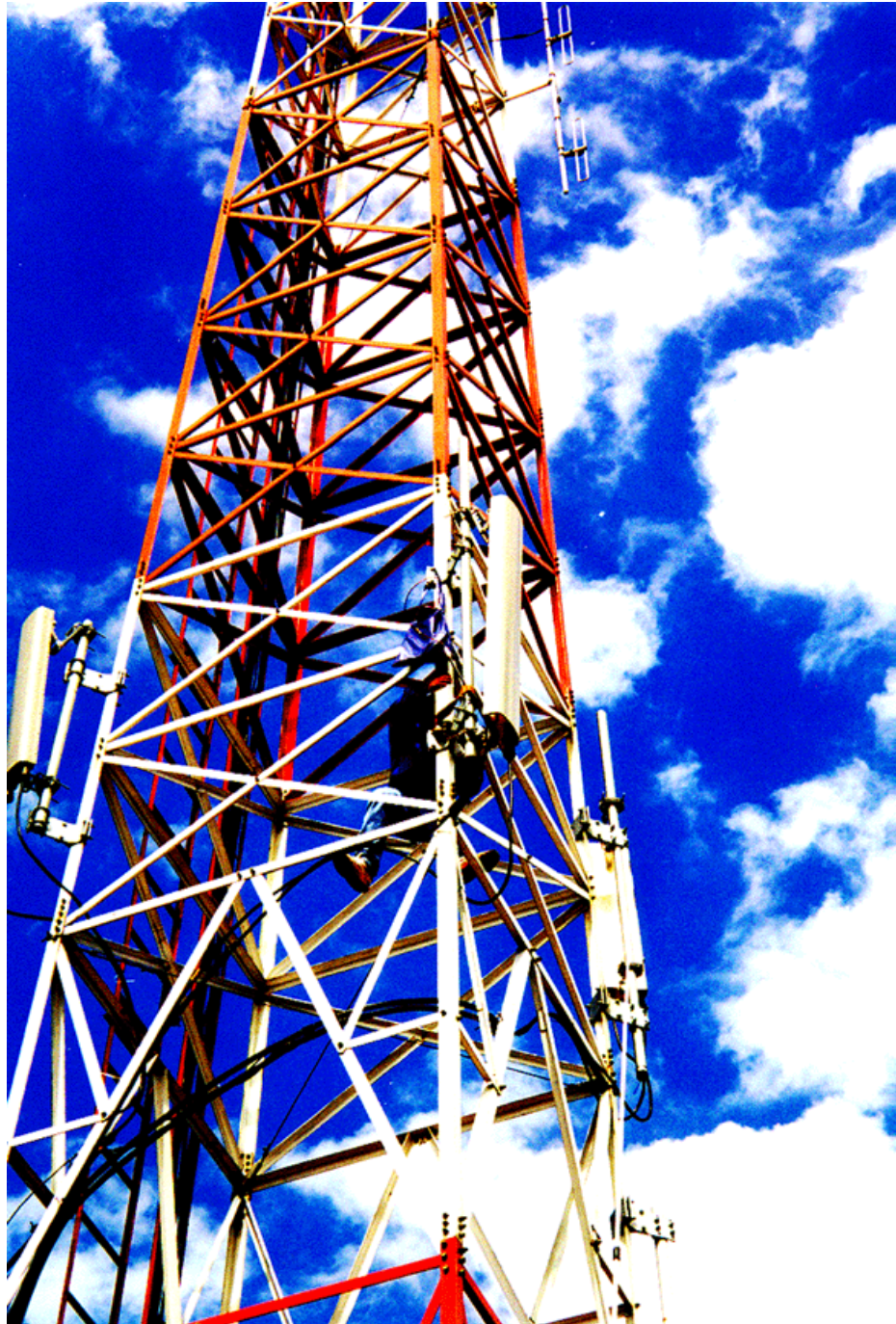




## High performance site components





## **Introduction**

**Egant AB is one of the leading suppliers of products for Cellular infrastructure.**

**Specialised in products that makes it possible to share antenna systems, combining signals and designing cost effective mobile networks.**

**Egant AB works close together with its customers to make solutions and projects optimized for today's demands.**

**Giving you products that is always in the latest design and highest technology.**

**Our design centre in Stockholm Sweden is always happy for new challenges and welcomes all new projects and design ideas.**

**More information can be found at: [www.egant.se](http://www.egant.se)**

### **EGANT AB**

Box 945

114 79 Stockholm

Sweden

Tel: +46 (0)8 6200 650

Email: [info@egant.se](mailto:info@egant.se)

Website: [www.egant.se](http://www.egant.se)



## Attenuators

[www.egant.se](http://www.egant.se)

### Frequency range

#### Attenuators

<u>Frequency range</u>	<u>Description</u>	<u>Connector</u>	<u>Ordering number</u>
DC-3GHz	Attenuator 3dB, 5W	N(m)-N(f)	EG 607 0104
DC-3GHz	Attenuator 6dB, 5W	N(m)-N(f)	EG 607 0105
DC-3GHz	Attenuator 10dB, 5W	N(m)-N(f)	EG 607 0087
DC-3GHz	Attenuator 20dB, 5W	N(m)-N(f)	EG 607 0096
376-2170MHz	Attenuator 5dB, 30W	N(m)-N(f)	EG 607 0029
376-2170MHz	Attenuator 10dB, 30W	N(m)-N(f)	EG 607 0013
376-2170MHz	Attenuator 15dB, 30W	N(m)-N(f)	EG 607 0030
376-2170MHz	Attenuator 20dB, 30W	N(m)-N(f)	EG 607 0014
376-2170MHz	Attenuator 5dB, 30W	7/16(m)-7/16(f)	EG 607 0025
376-2170MHz	Attenuator 10dB, 30W	7/16(m)-7/16(f)	EG 607 0026
376-2170MHz	Attenuator 15dB, 30W	7/16(m)-7/16(f)	EG 607 0027
376-2170MHz	Attenuator 20dB, 30W	7/16(m)-7/16(f)	EG 607 0028
376-2170MHz	Attenuator 30dB, 30W	7/16(m)-7/16(f)	EG 607 0020
376-2170MHz	Attenuator 5dB, 60W	N(m)-N(f)	EG 607 0009
376-2170MHz	Attenuator 10dB, 60W	N(m)-N(f)	EG 607 0010
376-2170MHz	Attenuator 30dB, 60W	N(m)-N(f)	EG 607 0011
376-2170MHz	Attenuator 20dB, 100W	7/16(m)-7/16(f)	EG 607 0106
376-2700MHz	Attenuator 5dB, 60W	N(m)-N(f)	EG 607 0040
376-2700MHz	Attenuator 10dB, 60W	N(m)-N(f)	EG 607 0041
376-2700MHz	Attenuator 20dB, 60W	N(m)-N(f)	EG 607 0042
376-2700MHz	Attenuator 30dB, 60W	N(m)-N(f)	EG 607 0043
376-2700MHz	Attenuator 5dB, 60W	7/16(m)-7/16(f)	EG 607 0036
376-2700MHz	Attenuator 10dB, 60W	7/16(m)-7/16(f)	EG 607 0037
376-2700MHz	Attenuator 20dB, 60W	7/16(m)-7/16(f)	EG 607 0038
376-2700MHz	Attenuator 30dB, 60W	7/16(m)-7/16(f)	EG 607 0039
880-2170MHz	Attenuator 5dB, 60W	7/16(m)-7/16(f)	EG 607 0003
880-2170MHz	Attenuator 10dB, 60W	7/16(m)-7/16(f)	EG 607 0004
880-2170MHz	Attenuator 15dB, 60W	7/16(m)-7/16(f)	EG 607 0005
880-2170MHz	Attenuator 20dB, 60W	7/16(m)-7/16(f)	EG 607 0012
880-2170MHz	Attenuator 30dB, 60W	7/16(m)-7/16(f)	EG 607 0016



**Attenuators DC - 3.0GHz  
N(m) - N(f), 5W**

### **Highly versatile implementation**

The attenuators are electrically and mechanically designed to be used for indoor and outdoor applications. Their broad bandwidth range makes it possible to use them in almost all types of cellular systems.

## Technical Specifications for Attenuators

Below are some typical data. For more detailed information, please contact us.

	EG 607 0104	EG 607 0105	EG 607 0087	EG 607 0096
<b>Electrical Specifications</b>				
Product number:	EG 607 0104	EG 607 0105	EG 607 0087	EG 607 0096
Frequency band:	DC - 3.0GHz	DC - 3.0GHz	DC - 3.0GHz	DC - 3.0GHz
Attenuation:	<b>3 dB</b>	<b>6 dB</b>	<b>10 dB</b>	<b>20 dB</b>
Input return loss:	> 18 dB	> 20 dB	> 20 dB	> 20 dB
Max input power:	5 W	5 W	5 W	5 W
<b>Environmental Specifications</b>				
Temp. range (normal operation):	-40 to +70° C	-40 to +70° C	-40 to +70° C	-40 to +70° C
Humidity:	Relative 5 - 100%	Relative 5 - 100%	Relative 5 - 100%	Relative 5 - 100%
Sealing:	IP65	IP65	IP65	IP65
<b>Mechanical Specifications</b>				
Dimensions (W x H x D):	70 x 20 x 20 mm	70 x 20 x 20 mm	70 x 20 x 20 mm	70 x 20 x 20 mm
Connectors:	N(m) - N(f)	N(m) - N(f)	N(m) - N(f)	N(m) - N(f)

Egant reserves the right to change this product specification at any time without notice.

Egant AB  
Box 945  
SE-114 79 Stockholm  
Sweden  
Phone: +46 (0)8 620 06 50  
E-mail: info@egant.se  
www.egant.se

## Attenuators



### Highly versatile implementation

The attenuators are electrically and mechanically designed to be used for indoor and outdoor applications. Their broad bandwidth range makes it possible to use them in almost all types of cellular systems.

## Technical Specifications for Attenuators

Below are some typical data. For more detailed information, please contact us.

<b>Electrical Specifications</b>				
Product number:	EG 607 0003	EG 607 0004	EG 607 0005	EG 607 0012
Frequency band:	880 - 2170 MHz	880 - 2170 MHz	880 - 2170 MHz	880 - 2170 MHz
Attenuation:	<b>5 dB</b>	<b>10 dB</b>	<b>15 dB</b>	<b>20 dB</b>
Input return loss:	> 20 dB	> 20 dB	> 20 dB	> 20 dB
Max input power:	60 W	60 W	60 W	60 W
Connectors:	7/16 (f) - (m)	7/16 (f) - (m)	7/16 (f) - (m)	7/16 (f) - (m)
<b>Electrical Specifications</b>				
Product number:	EG 607 0009	EG 607 0010	EG 607 0011	EG 607 0020
Frequency band:	376 - 2170 MHz	376 - 2170 MHz	376 - 2170 MHz	376 - 2170 MHz
Attenuation:	<b>10 dB</b>	<b>20 dB</b>	<b>30 dB</b>	<b>30 dB</b>
Input return loss:	> 20 dB	> 20 dB	> 20 dB	> 20 dB
Max input power:	60 W	60 W	60 W	30 W
Connectors:	N (f) - (m)	N (f) - (m)	N (f) - (m)	7/16 (f) - (m)
<b>Electrical Specifications</b>				
Product number:	EG 607 0025	EG 607 0026	EG 607 0027	EG 607 0028
Frequency band:	376 - 2170 MHz	376 - 2170 MHz	376 - 2170 MHz	376 - 2170 MHz
Attenuation:	<b>5 dB</b>	<b>10 dB</b>	<b>15 dB</b>	<b>20 dB</b>
Input return loss:	> 20 dB	> 20 dB	> 20 dB	> 20 dB
Max input power:	30 W	30 W	30 W	30 W
Connectors:	7/16 (f) - (m)	7/16 (f) - (m)	7/16 (f) - (m)	7/16 (f) - (m)
<b>Electrical Specifications</b>				
Product number:	EG 607 0029	EG 607 0013	EG 607 0030	EG 607 0014
Frequency band:	376 - 2170 MHz	376 - 2170 MHz	376 - 2170 MHz	376 - 2170 MHz
Attenuation:	<b>5 dB</b>	<b>10 dB</b>	<b>15 dB</b>	<b>20 dB</b>
Input return loss:	> 20 dB	> 20 dB	> 20 dB	> 20 dB
Max input power:	30 W	30W	30 W	30 W
Connectors:	N (f) - (m)	N (f) - (m)	N (f) - (m)	N (f) - (m)
<b>Environmental Specifications</b>				
Temp. range (normal operation):	-55 to +125° C	-55 to +125° C	-55 to +125° C	-55 to +125° C
Humidity:	Relative 5 - 100%	Relative 5 - 100%	Relative 5 - 100%	Relative 5 - 100%
Sealing:	IP65	IP65	IP65	IP65

Egant reserves the right to change this product specification at any time without notice.

Egant AB  
 Box 945  
 SE-114 79 Stockholm  
 Sweden  
 Phone: +46 (0)8 620 06 50  
 E-mail: info@egant.se  
 www.egant.se

## Attenuators



### Highly versatile implementation

The attenuators are electrically and mechanically designed to be used for indoor and outdoor applications. Their broad bandwidth range makes it possible to use them in almost all types of cellular systems.



## Technical Specifications for Attenuators

Below are some typical data. For more detailed information, please contact us.

<b>Electrical Specifications</b>				
Product number:	EG 607 0036	EG 607 0037	EG 607 0038	EG 607 0039
Frequency band:	376 - 2700 MHz	376 - 2700 MHz	376 - 2700 MHz	376 - 2700 MHz
Attenuation:	<b>5 dB</b>	<b>10 dB</b>	<b>20 dB</b>	<b>30 dB</b>
Input return loss:	> 18 dB, typ 25dB	> 18 dB, typ 25dB	> 18 dB, typ 25dB	> 18 dB, typ 25dB
Max input power:	60 W	60 W	60 W	60 W
Connectors:	7/16 (f) - (m)	7/16 (f) - (m)	7/16 (f) - (m)	7/16 (f) - (m)
<b>Electrical Specifications</b>				
Product number:	EG 607 0040	EG 607 0041	EG 607 0042	EG 607 0043
Frequency band:	376 - 2700 MHz	376 - 2700 MHz	376 - 2700 MHz	376 - 2700 MHz
Attenuation:	<b>5 dB</b>	<b>10 dB</b>	<b>20 dB</b>	<b>30 dB</b>
Input return loss:	> 18 dB, typ 25dB	> 18 dB, typ 25dB	> 18 dB, typ 25dB	> 18 dB, typ 25dB
Max input power:	60 W	60 W	60 W	60 W
Connectors:	N (f) - (m)	N (f) - (m)	N (f) - (m)	N (f) - (m)
<b>Electrical Specifications</b>				
Product number:	EG 607 0099			
Frequency band:	376 - 2700 MHz			
Attenuation:	<b>10 dB</b>			
Input return loss:	> 18 dB, typ 25dB			
Max input power:	60 W			
Connector:	7/16 (m) - N (f)			
<b>Environmental Specifications</b>				
Temp. range (normal operation):	-40 to +55° C	-40 to +55° C	-40 to +55° C	-40 to +55° C
Humidity:	Relative 5 - 100%	Relative 5 - 100%	Relative 5 - 100%	Relative 5 - 100%
Sealing:	IP65	IP65	IP65	IP65

Egant reserves the right to change this product specification at any time without notice.

Egant AB  
 Box 945  
 SE-114 79 Stockholm  
 Sweden  
 Phone: +46 (0)8 620 06 50  
 E-mail: info@egant.se  
 www.egant.se



## Attenuators PIM Free

[www.egant.se](http://www.egant.se)

### Frequency range

#### *Attenuators*

380-395MHz  
698-2700MHz  
698-2700MHz  
698-2700MHz  
698-2700MHz  
698-2700MHz  
698-2700MHz  
698-2700MHz  
698-2700MHz  
791-862MHz  
876-925MHz  
890-960MHz  
880-960MHz  
1710-1880MHz  
1920-2170MHz  
2500-2690MHz

### Description

Attenuator, 10dB, 60W  
Attenuator, 5dB, 100W  
Attenuator, 10dB, 100W  
Attenuator, 15dB, 100W  
Attenuator, 20dB, 100W  
Attenuator, 5dB, 100W  
Attenuator, 10dB, 100W  
Attenuator, 15dB, 100W  
Attenuator, 20dB, 100W  
Attenuator 800, 20dB , 60W  
Attenuator, 15dB, 60W  
Attenuator, 10dB, 60W  
Attenuator 900, 20dB , 60W  
Attenuator 1800, 20dB , 60W  
Attenuator 2100, 20dB , 60W  
Attenuator 2600, 20dB , 60W

### Connector

7/16(f)-SMA(f)  
7/16(f)-7/16(f)  
7/16(f)-7/16(f)  
7/16(f)-7/16(f)  
7/16(f)-7/16(f)  
N(f)-N(f)  
N(f)-N(f)  
N(f)-N(f)  
N(f)-N(f)  
7/16(f)-7/16(f)  
7/16(f)-SMA(f)  
7/16(f)-SMA(f)  
7/16(f)-7/16(f)  
7/16(f)-7/16(f)  
7/16(f)-7/16(f)  
7/16(f)-7/16(f)

### Ordering number

EG 607 0157  
EG 607 0161  
EG 607 0162  
EG 607 0163  
EG 607 0164  
EG 607 0165  
EG 607 0166  
EG 607 0167  
EG 607 0168  
EG 607 0174  
EG 607 0179  
EG 607 0159  
EG 607 0175  
EG 607 0176  
EG 607 0177  
EG 607 0178



**10dB, 15dB Attenuators**  
**380- 395, 876-925, 890-960MHz**  
**60W PIM**

### **Highly versatile implementation**

The attenuators are electrically and mechanically designed to be used for indoor and outdoor applications. Their broad bandwidth range makes it possible to use them in almost all types of cellular systems.

## Technical Specifications for Attenuators

Below are some typical data. For more detailed information, please contact us.

<b>Electrical Specifications</b>				
Product number:	EG 607 0157	EG 607 0158	EG 607 0159	EG 607 0179
Frequency band:	380 - 395 MHz	876 - 925 MHz	890 - 960 MHz	876 - 925 MHz
Attenuation:	<b>-10 dB, +/- 1.2dB</b>	<b>-10 dB, +/- 1.2dB</b>	<b>-10 dB,+/- 1.2dB</b>	<b>-15 dB,+/- 1.2dB</b>
Input return loss:	> 23 dB, typ 25dB	> 23 dB, typ 25dB	> 23 dB, typ 25dB	> 23 dB, typ 25dB
3rd order intermodulation: IM3, 2 x 43dDm	< -110dBm, 153dBc	< -110dBm, 153dBc	< -110dBm, 153dBc	< -110dBm, 153dBc
Max input power:	60 W	60 W	60 W	60 W
Connectors:	7/16 (f) - sma (f)	7/16 (f) - sma (f)	7/16 (f) - sma (f)	7/16 (f) - sma (f)
<b>Environmental Specifications</b>				
Temp. range (normal operation):	-20 to +55° C	-20 to +55° C	-20 to +55° C	-20 to +55° C
Humidity:	Relative 5 - 100%	Relative 5 - 100%	Relative 5 - 100%	Relative 5 - 100%
Sealing:	IP 65	IP 65	IP 65	IP 65

Egant reserves the right to change this product specification at any time without notice.

Egant AB  
Box 945  
SE-114 79 Stockholm  
Sweden  
Phone: +46 (0)8 620 06 50  
E-mail: [info@egant.se](mailto:info@egant.se)  
[www.egant.se](http://www.egant.se)



## Attenuators 698-2700MHz 5dB, 10dB, 15dB, 20dB



### Highly versatile implementation

The attenuators are electrically and mechanically designed to be used for indoor and outdoor applications. Their broad bandwidth range makes it possible to use them in almost all types of cellular systems.

## Technical Specifications for Attenuators

Below are some typical data. For more detailed information, please contact us.

<b>Electrical Specifications</b>				
Product number:	EG 607 0161	EG 607 0162	EG 607 0163	EG 607 0164
Frequency band:	698 - 2700 MHz	698 - 2700 MHz	698 - 2700 MHz	698 - 2700 MHz
Attenuation:	<b>5 dB, +/- 1.2dB</b>	<b>10 dB, +/- 1.2dB</b>	<b>15 dB, +/- 1.2dB</b>	<b>20 dB, +/- 1.2dB</b>
Input return loss:	> 18 dB, typ 25dB	> 18 dB, typ 25dB	> 18 dB, typ 25dB	> 18 dB, typ 25dB
3rd order intermodulation: IM3, 2 x 43dDm	< -110dBm, 153dBc	<-110dBm,153dBc	<110dBm,153dBc	<110dBm, 153dBc
Max input power:	100 W	100 W	100 W	100 W
Connectors:	7/16 (f) - 7/16 (f)	7/16 (f) - 7/16 (f)	7/16 (f) - 7/16 (f)	7/16 (f) - 7/16 (f)
<b>Environmental Specifications</b>				
Temp. range (normal operation):	-40 to +55° C	-40 to +55° C	-40 to +55° C	-40 to +55° C
Humidity:	Relative 5 - 100%	Relative 5 - 100%	Relative 5 - 100%	Relative 5 - 100%
Sealing:	IP65	IP65	IP65	IP65
<b>Electrical Specifications</b>				
Product number:	EG 607 0165	EG 607 0166	EG 607 0167	EG 607 0168
Frequency band:	698 - 2700 MHz	698 - 2700 MHz	698 - 2700 MHz	698 - 2700 MHz
Attenuation:	<b>5 dB, +/- 1.2dB</b>	<b>10 dB, +/- 1.2dB</b>	<b>15 dB, +/- 1.2dB</b>	<b>20 dB, +/- 1.2dB</b>
Input return loss:	> 18 dB, typ 25dB	> 18 dB, typ 25dB	> 18 dB, typ 25dB	> 18 dB, typ 25dB
3rd order intermodulation: IM3, 2 x 43dDm	< -110dBm, 153dBc	<-110dBm,153dBc	<110dBm,153dBc	<110dBm,153dBc
Max input power:	100 W	100 W	100 W	100 W
Connectors:	N (f) - N (f)	N (f) - N (f)	N (f) - N (f)	N (f) - N (f)
<b>Environmental Specifications</b>				
Temp. range (normal operation):	-40 to +55° C	-40 to +55° C	-40 to +55° C	-40 to +55° C
Humidity:	Relative 5 - 100%	Relative 5 - 100%	Relative 5 - 100%	Relative 5 - 100%
Sealing:	IP65	IP65	IP65	IP65

Egant reserves the right to change this product specification at any time without notice.

Egant AB  
 Box 945  
 SE-114 79 Stockholm  
 Sweden  
 Phone: +46 (0)8 620 06 50  
 E-mail: info@egant.se  
 www.egant.se



**-10dB, -20dB Attenuators,  
10W - 60W  
LTE800, GSM900, GSM1800,  
UMTS2100, LTE2600**



### **Highly versatile implementation**

The attenuators are electrically and mechanically designed to be used for indoor and outdoor applications. Their broad bandwidth range makes it possible to use them in almost all types of cellular systems.

## Technical Specifications for Attenuators

Below are some typical data. For more detailed information, please contact us.

<b>Electrical Specifications</b>				
Product number:	EG 607 0174	EG 607 0175	EG 607 0176	EG 607 0177
Frequency band:	791 - 862 MHz	890 - 960 MHz	1710 - 1880 MHz	1920 - 2170 MHz
Attenuation:	<b>-20 dB, +/- 1.2dB</b>	<b>-20 dB, +/- 1.2dB</b>	<b>-20 dB, +/- 1.2dB</b>	<b>-20 dB, +/- 1.2dB</b>
Input return loss:	> 23 dB, typ 25dB	> 23 dB, typ 25dB	> 23 dB, typ 25dB	> 23 dB, typ 25dB
3rd order intermodulation: IM3, 2 x 43dDm	< -110dBm, 153dBc	<-110dBm,153dBc	<110dBm,153dBc	<110dBm, 153dBc
Max input power:	60 W	60 W	60 W	60 W
Connectors:	7/16 (f) - 7/16 (f)	7/16 (f) - 7/16 (f)	7/16 (f) - 7/16 (f)	7/16 (f) - 7/16 (f)
<b>Environmental Specifications</b>				
Temp. range (normal operation):	-40 to +55° C	-40 to +55° C	-40 to +55° C	-40 to +55° C
Humidity:	Relative 5 - 100%	Relative 5 - 100%	Relative 5 - 100%	Relative 5 - 100%
Sealing:	IP 65	IP 65	IP 65	IP 65
<b>Electrical Specifications</b>				
Product number:	EG 607 0178	EG 607 0180		
Frequency band:	2500 - 2690 MHz	1920 - 2170 MHz		
Attenuation:	<b>-20dB, +/- 1.2dB</b>	<b>-10dB, +/- 1.2dB</b>		
Input return loss:	> 23 dB, typ 25dB	> 20 dB, typ 25dB		
3rd order intermodulation: IM3, 2 x 43dDm	< -110dBm, 153dBc	< -110dBm, 153dBc		
Max input power:	60 W	60 W		
Connectors:	7/16 (f) - 7/16 (f)	7/16 (f) - 7/16 (f)		
<b>Environmental Specifications</b>				
Temp. range (normal operation):	-40 to +55° C	0 to +55° C		
Humidity:	Relative 5 - 100%	Relative 5 - 100%		
Sealing:	IP 65	Indoor		

Egant reserves the right to change this product specification at any time without notice.

Egant AB  
 Box 945  
 SE-114 79 Stockholm  
 Sweden  
 Phone: +46 (0)8 620 06 50  
 E-mail: info@egant.se  
 www.egant.se





## Terminations

[www.egant.se](http://www.egant.se)

### Frequency range

#### Terminations

<u>Frequency range</u>	<u>Description</u>	<u>Connector</u>	<u>Ordering number</u>
DC-2500MHz	Termination 1 W	N(m)	EG 500 0111
DC-2500MHz	Termination 5 W	N(m)	EG 500 1115
DC-2500MHz	Termination 10 W	N(m)	EG 500 1113
DC-2500MHz	Termination 20 W	N(m)	EG 100 9022
DC-2500MHz	Termination 30 W	N(m)	EG 607 0031
DC-2500MHz	Termination 50 W	N(m)	EG 100 9052
DC-2500MHz	Termination 60 W	N(m)	EG 100 9062
DC-2500MHz	Termination 100 W	N(m)	EG 607 0033
DC-2500MHz	Termination 1 W	N(f)	EG 607 0049
DC-2500MHz	Termination 5 W	N(f)	EG 500 1116
DC-2500MHz	Termination 10 W	N(f)	EG 500 1114
DC-2500MHz	Termination 20 W	N(f)	EG 100 9023
DC-2500MHz	Termination 30 W	N(f)	EG 100 9033
DC-2500MHz	Termination 50 W	N(f)	EG 100 9053
DC-2500MHz	Termination 60 W	N(f)	EG 100 9063
DC-2500MHz	Termination 100 W	N(f)	EG 607 0050
DC-2500MHz	Termination 1 W	7/16(m)	EG 500 0176
DC-2500MHz	Termination 5 W	7/16(m)	EG 500 0185
DC-2500MHz	Termination 10 W	7/16(m)	EG 607 0048
DC-2500MHz	Termination 20 W	7/16(m)	EG 100 9020
DC-2500MHz	Termination 30 W	7/16(m)	EG 100 9030
DC-2500MHz	Termination 50 W	7/16(m)	EG 100 9050
DC-2500MHz	Termination 60 W	7/16(m)	EG 100 9060
DC-2500MHz	Termination 100 W	7/16(m)	EG 607 0032
DC-2500MHz	Termination 1 W	7/16(f)	EG 607 0051
DC-2500MHz	Termination 5 W	7/16(f)	EG 500 0186
DC-2500MHz	Termination 10 W	7/16(f)	EG 607 0052
DC-2500MHz	Termination 20 W	7/16(f)	EG 100 9021
DC-2500MHz	Termination 30 W	7/16(f)	EG 100 9031
DC-2500MHz	Termination 50 W	7/16(f)	EG 100 9051
DC-2500MHz	Termination 60 W	7/16(f)	EG 100 9061
DC-2500MHz	Termination 100 W	7/16(f)	EG 607 0053



## Terminations

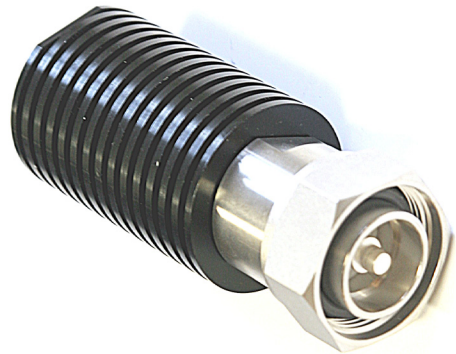
[www.egant.se](http://www.egant.se)

### Frequency range

#### Terminations

<u>Frequency range</u>	<u>Description</u>	<u>Connector</u>	<u>Ordering number</u>
DC-2700MHz	Termination 1 W	N(m)	EG 607 0055
DC-2700MHz	Termination 5 W	N(m)	EG 607 0056
DC-2700MHz	Termination 10 W	N(m)	EG 607 0057
DC-2700MHz	Termination 20 W	N(m)	EG 607 0058
DC-2700MHz	Termination 30 W	N(m)	EG 607 0059
DC-2700MHz	Termination 50 W	N(m)	EG 607 0075
DC-2700MHz	Termination 60 W	N(m)	EG 607 0076
DC-2700MHz	Termination 100 W	N(m)	EG 607 0077
DC-2700MHz	Termination 1 W	N(f)	EG 607 0060
DC-2700MHz	Termination 5 W	N(f)	EG 607 0061
DC-2700MHz	Termination 10 W	N(f)	EG 607 0062
DC-2700MHz	Termination 20 W	N(f)	EG 607 0063
DC-2700MHz	Termination 30 W	N(f)	EG 607 0064
DC-2700MHz	Termination 50 W	N(f)	EG 607 0078
DC-2700MHz	Termination 60 W	N(f)	EG 607 0079
DC-2700MHz	Termination 100 W	N(f)	EG 607 0080
DC-2700MHz	Termination 1 W	7/16(m)	EG 607 0065
DC-2700MHz	Termination 5 W	7/16(m)	EG 607 0066
DC-2700MHz	Termination 10 W	7/16(m)	EG 607 0067
DC-2700MHz	Termination 20 W	7/16(m)	EG 607 0068
DC-2700MHz	Termination 30 W	7/16(m)	EG 607 0069
DC-2700MHz	Termination 50 W	7/16(m)	EG 607 0081
DC-2700MHz	Termination 60 W	7/16(m)	EG 607 0082
DC-2700MHz	Termination 100 W	7/16(m)	EG 607 0083
DC-2700MHz	Termination 1 W	7/16(f)	EG 607 0070
DC-2700MHz	Termination 5 W	7/16(f)	EG 607 0071
DC-2700MHz	Termination 10 W	7/16(f)	EG 607 0072
DC-2700MHz	Termination 20 W	7/16(f)	EG 607 0073
DC-2700MHz	Termination 30 W	7/16(f)	EG 607 0074
DC-2700MHz	Termination 50 W	7/16(f)	EG 607 0084
DC-2700MHz	Termination 60 W	7/16(f)	EG 607 0085
DC-2700MHz	Termination 100 W	7/16(f)	EG 607 0086

## Terminations DC - 2500 MHz



### High performance load

In order to get maximum performance from our products, use the Egant high performance loads when terminating ports.

They are available with standard connectors, such as 7/16 male or female, N male or female.

### Broadband, DC - 2500 MHz

The terminations are electrically and mechanically designed to be used for indoor and outdoor applications. Their broad bandwidth range makes it possible to use them in almost all types of cellular systems.



## Technical Specifications for Terminations 1 W - 100 W

Below are some typical data. For more detailed information, please contact us.

### Electrical Specifications

Frequency band:	DC - 2500 MHz
Input return loss:	25 dB
Impedance in/out:	50 Ohm

### Environmental Specifications

Temp. range (normal operation):	-55 to +125° C
Humidity:	Relative 5 - 100%
Sealing:	IP65

#### N(m)

	<b>Product number:</b>	<b>Dimensions:</b>	<b>Weight:</b>
1 W	EG 500 0111	20 x 52 x 20 mm	0.1 Kg
5 W	EG 500 1115	24 x 38 x 24 mm	0.1 Kg
10 W	EG 500 1113	24 x 40 x 24 mm	0.1 Kg
20 W	EG 100 9022	38 x 80 x 38 mm	0.3 Kg
30 W	EG 607 0031	38 x 80 x 38 mm	0.3 Kg
50 W	EG 100 9052	140 x 70 x 40 mm	0.8 Kg
60 W	EG 100 9062	140 x 70 x 40 mm	0.8 Kg
100 W	EG 607 0033	140 x 70 x 40 mm	0.8 Kg

#### N(f)

	<b>Product number:</b>	<b>Dimensions:</b>	<b>Weight:</b>
1 W	EG 607 0049	24 x 38 x 24 mm	0.1 Kg
5 W	EG 500 1116	24 x 38 x 24 mm	0.1 Kg
10 W	EG 500 1114	24 x 40 x 24 mm	0.1 Kg
20 W	EG 100 9023	38 x 80 x 38 mm	0.3 Kg
30 W	EG 100 9033	38 x 80 x 38 mm	0.3 Kg
50 W	EG 100 9053	140 x 70 x 40 mm	0.8 Kg
60 W	EG 100 9063	140 x 70 x 40 mm	0.8 Kg
100 W	EG 607 0050	140 x 70 x 40 mm	0.8 Kg

#### 7/16(m)

	<b>Product number:</b>	<b>Dimensions:</b>	<b>Weight:</b>
1 W	EG 500 0176	33 x 40 x 33 mm	0.1 Kg
5 W	EG 500 0185	33 x 47 x 33 mm	0.2 Kg
10 W	EG 607 0048	33 x 50 x 33 mm	0.2 Kg
20 W	EG 100 9020	38 x 80 x 38 mm	0.3 Kg
30 W	EG 100 9030	38 x 80 x 38 mm	0.3 Kg
50 W	EG 100 9050	140 x 70 x 40 mm	0.8 Kg
60 W	EG 100 9060	140 x 70 x 40 mm	0.8 Kg
100 W	EG 607 0032	140 x 70 x 40 mm	0.8 Kg

#### 7/16(f)

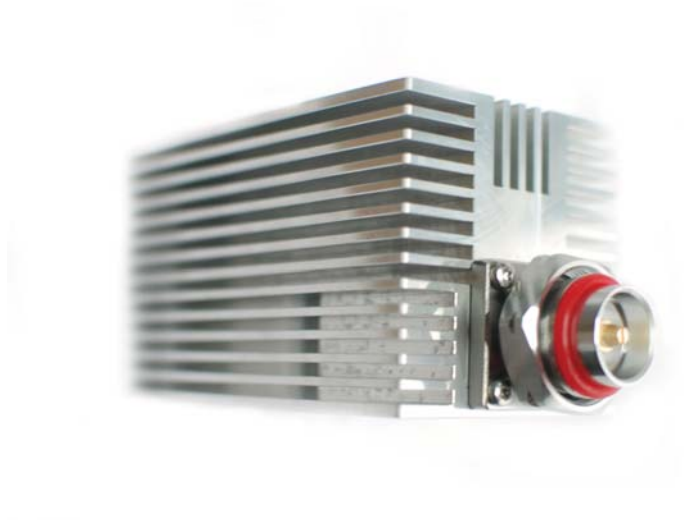
	<b>Product number:</b>	<b>Dimensions:</b>	<b>Weight:</b>
1 W	EG 607 0051	33 x 40 x 33 mm	0.2 Kg
5 W	EG 500 0186	33 x 47 x 33 mm	0.2 Kg
10 W	EG 607 0052	33 x 50 x 33 mm	0.2 Kg
20 W	EG 100 9021	38 x 80 x 38 mm	0.3 Kg
30 W	EG 100 9031	38 x 80 x 38 mm	0.3 Kg
50 W	EG 100 9051	140 x 70 x 40 mm	0.8 Kg
60 W	EG 100 9061	140 x 70 x 40 mm	0.8 Kg
100 W	EG 607 0053	140 x 70 x 40 mm	0.8 Kg

Egant reserves the right to change this product specification at any time without notice.

Egant AB  
Box 945  
SE-114 79 Stockholm  
Sweden  
Phone:+46 (0)8 620 06 50  
E-mail: info@egant.se  
www.egant.se

## **Terminations**

**DC - 2700 MHz**



### **High performance load**

In order to get maximum performance from our products, use the Egant high performance loads when terminating ports.

They are available with standard connectors, such as 7/16 male or female, N male or female.



### **Broadband, DC - 2700 MHz**

The terminations are electrically and mechanically designed to be used for indoor and outdoor applications. Their broad bandwidth range makes it possible to use them in almost all types of cellular systems.

## Technical Specifications for Terminations 1 W - 100W

Below are some typical data. For more detailed information, please contact us.

### Electrical Specifications

Frequency band:	DC - 2700 MHz
Input return loss:	25 dB
Impedance in/out:	50 Ohm

### Environmental Specifications

Temp. range (normal operation):	-55 to +125° C
Humidity:	Relative 5 - 100%
Sealing:	IP65

#### N(m)

	Product number:	Dimensions:	Weight:
1 W	EG 607 0055	20 x 52 x 20 mm	0.1 Kg
5 W	EG 607 0056	24 x 38 x 24 mm	0.1 Kg
10 W	EG 607 0057	24 x 40 x 24 mm	0.1 Kg
20 W	EG 607 0058	38 x 80 x 38 mm	0.3 Kg
30 W	EG 607 0059	38 x 80 x 38 mm	0.3 Kg
50 W	EG 607 0075	140 x 70 x 40 mm	0.8 Kg
60 W	EG 607 0076	140 x 70 x 40 mm	0.8 Kg
100 W	EG 607 0077	140 x 70 x 40 mm	0.8 Kg

#### N(f)

	Product number:	Dimensions:	Weight:
1 W	EG 607 0060	24 x 38 x 24 mm	0.1 Kg
5 W	EG 607 0061	24 x 38 x 24 mm	0.1 Kg
10 W	EG 607 0062	24 x 40 x 24 mm	0.1 Kg
20 W	EG 607 0063	38 x 80 x 38 mm	0.3 Kg
30 W	EG 607 0064	38 x 80 x 38 mm	0.3 Kg
50 W	EG 607 0078	140 x 70 x 40 mm	0.8 Kg
60 W	EG 607 0079	140 x 70 x 40 mm	0.8 Kg
100 W	EG 607 0080	140 x 70 x 40 mm	0.8Kg

#### 7/16(m)

	Product number:	Dimensions:	Weight:
1 W	EG 607 0065	33 x 40 x 33 mm	0.1 Kg
5 W	EG 607 0066	33 x 47 x 33 mm	0.2 Kg
10 W	EG 607 0067	33 x 50 x 33 mm	0.2 Kg
20 W	EG 607 0068	38 x 80 x 38 mm	0.3 Kg
30 W	EG 607 0069	38 x 80 x 38 mm	0.3 Kg
50 W	EG 607 0081	140 x 70 x 40 mm	0.8 Kg
60 W	EG 607 0082	140 x 70 x 40 mm	0.8 Kg
100 W	EG 607 0083	140 x 70 x 40 mm	0.8 Kg

#### 7/16(f)

	Product number:	Dimensions:	Weight:
1 W	EG 607 0070	33 x 40 x 33 mm	0.2 Kg
5 W	EG 607 0071	33 x 47 x 33 mm	0.2 Kg
10 W	EG 607 0072	33 x 50 x 33 mm	0.2 Kg
20 W	EG 607 0073	38 x 80 x 38 mm	0.3 Kg
30 W	EG 607 0074	38 x 80 x 38 mm	0.3 Kg
50 W	EG 607 0084	140 x 70 x 40 mm	0.8 Kg
60 W	EG 607 0085	140 x 70 x 40 mm	0.8 Kg
100 W	EG 607 0086	140 x 70 x 40 mm	0.8 Kg

Egant reserves the right to change this product specification at any time without notice.

Egant Cellular Components  
Box 945  
SE-114 79 Stockholm  
Sweden  
Phone: +46 (0)8 620 06 50  
Fax: +46 (0)70 386 53 53  
E-mail: info@egant.se  
www.egant.se



## Cable loads

[www.egant.se](http://www.egant.se)

### Frequency range

#### *Cable loads*

376-500MHz

791-960MHz

1710-1880MHz

1920-2170MHz

2500-2690MHz

698-2700MHz

698-2700MHz

698-2700MHz

### Description

Cable load 5W

Cable load 5W

Cable load 5W

Cable load 5W

Cable load 5W

Cable load 20W

Cable load 60W

Cable load 100W

### Connector

7/16(f)

7/16(f)

7/16(f)

7/16(f)

7/16(f)

7/16(f)

7/16(f)

7/16(f)

### Ordering number

EG 607 0169

EG 607 0170

EG 607 0171

EG 607 0172

EG 607 0173

EG 607 0035

EG 100 9099

EG 100 9100



**Cable Load 5W**  
**Excellent PIM performance**



**High performance Cable Load**

In order to get maximum performance from our products, use the Egant high performance cable load with extremely low Intermodulation figures, when terminating ports.

**Low Intermodulation with high VSWR**

The cable loads are electrically and mechanically designed to be used for indoor applications.



## Technical Specifications for Cable Load 5W

Below are some typical data. For more detailed information, please contact us.

<b>Electrical Specifications</b>			
Product number:	EG 607 0169	EG 607 0170	EG 607 0171
Frequency band:	376 - 500 MHz	791 - 960 MHz	1710 - 1880 MHz
Input Return Loss:	> 22dB	> 22dB	> 22dB
Power Rating:			
Max input power:	5 W	5 W	5 W
3rd order intermodulation:			
IM3, 2 x 37 dBm:	≤ -110 dBm	≤ -110 dBm	≤ -110 dBm
Impedance in/out:	50 Ohm	50 Ohm	50 Ohm
<b>Mechanical Specifications</b>			
Dimensions (W x H x D):	140 x 49 x 49 mm	140 x 49 x 49 mm	140 x 49 x 49 mm
Connectors:	7/16 (f)	7/16 (f)	7/16 (f)
Weight:	0.95 Kg	0.85 Kg	0.8 Kg
<b>Environmental Specifications</b>			
Temp. range (normal operation):	-20 to + 55° C	-20 to + 55° C	-20 to + 55° C
Sealing:	Indoor	Indoor	Indoor
<b>Electrical Specifications</b>			
Product number:	EG 607 0172	EG 607 0173	
Frequency band:	1920 - 2170 MHz	2500 - 2690 MHz	
Input Return Loss:	>22 dB	>22 dB	
Power Rating:			
Max input power:	5 W	5 W	
3rd order intermodulation:			
IM3, 2 x 37 dBm:	≤ -110 dBm	≤ -110 dBm	
Impedance in/out:	50 Ohm	50 Ohm	
<b>Mechanical Specifications</b>			
Dimensions (W x H x D):	140 x 49 x 49 mm	140 x 49 x 49 mm	
Connectors:	7/16 (f)	7/16 (m)	
Weight:	0.8 Kg	0.8 Kg	
<b>Environmental Specifications</b>			
Temp. range (normal operation):	-20 to + 55° C	-20 to + 55° C	
Sealing:	Indoor	Indoor	

Egant reserves the right to change this product specification at any time without notice.

Egant AB  
Box 945  
SE-114 79 Stockholm  
Sweden  
Phone: +46 (0)8 620 06 50  
E-mail: info@egant.se  
www.egant.se



**Cable Load 20W - 100W**  
**Intermodulation -160dBc**  
**698 - 2700 MHz**



### **High performance Cable Load**

In order to get maximum performance from our products, use the Egant high performance cable load with extremely low Intermodulation figures, when terminating ports.

### **Intermodulation, -160dBc**

The cable loads are electrically and mechanically designed to be used for indoor and outdoor applications. Their broad bandwidth range makes it possible to use them in almost all types of cellular systems.

## Technical Specifications for Cable Load 20W - 100W

Below are some typical data. For more detailed information, please contact us.

<b>Electrical Specifications</b>			
Product number:	EG 607 0035	EG 100 9099	EG 100 9100
Frequency band:	698 - 2700 MHz	698 - 2700 MHz	698 - 2700 MHz
Input Return Loss:	23 dB, typ 25dB	23 dB, typ 25dB	23 dB, typ 25dB
Power Rating:			
Max input power:	20 W	60 W	100 W
3rd order intermodulation:			
IM3, 2 x 43 dBm:	<-117 dBm, -160dBc	<-117 dBm, -160dBc	<-117 dBm, -160dBc
Impedance in/out:	50 Ohm	50 Ohm	50 Ohm
<b>Mechanical Specifications</b>			
Dimensions (W x H x D):	145 x 50 x 50 mm	145 x 65 x 65 mm	175 x 65 x 65 mm
Connectors:	7/16 (f)	7/16 (f)	7/16 (f)
Weight:	0.8 Kg	1.2 Kg	1.9 Kg
<b>Environmental Specifications</b>			
Temp. range (normal operation):	-40 to + 55° C	-40 to + 55° C	-40 to + 55° C
Humidity:	Relative 5 - 100%	Relative 5 - 100%	Relative 5 - 100%
Sealing:	Indoor	Indoor	Indoor

Egant reserves the right to change this product specification at any time without notice.

Egant AB  
Box 945  
SE-114 79 Stockholm  
Sweden  
Phone: +46 (0)8 620 06 50  
E-mail: [info@egant.se](mailto:info@egant.se)  
[www.egant.se](http://www.egant.se)